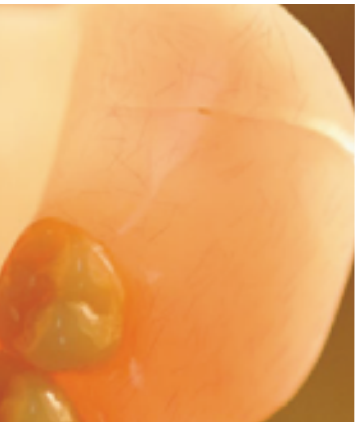


# Denture REPAIR

## Clinical Guide



### CRACK

Check fit and need for reline prior to taking any impression. Fill gaps by taking reline impression.  
Send as is



### FLANGE FRACTURE

Check fit and need for reline prior to taking any impression. Fill gaps by taking reline impression.  
New piece - take a single alginate impression with the denture is in place.

Reattach broken piece - glue it and verify the fit in the patient's mouth



### FRACTURE

Check fit and need for reline, reline may be necessary after repairing

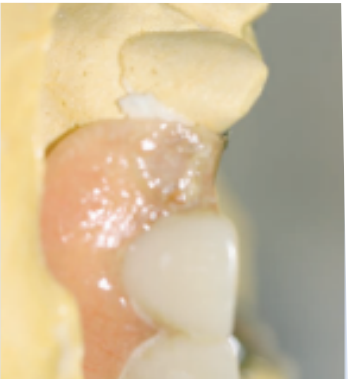
Full denture - "clean break" glue the pieces together, verifying the fit and bite in the patient's mouth

Partial denture - If large portion is able to be seated take impression with broken portion seated. If ill-fitting use heavy body to support fit

Metal frame partials - Always take impression with denture in



MISSING TOOTH FULL DENTURE  
SEND THE APPLIANCE AS IS, ALONG WITH THE TOOTH IF AVAILABLE.



MISSING TOOTH PARTIAL DENTURE  
CHECK FIT AND NEED FOR RELINE PRIOR TO TAKING ANY IMPRESSION. FILL GAPS BY TAKING RELINE IMPRESSION.  
TAKE AN IMPRESSION WITH THE PARTIAL IN PLACE KEEPING THE PARTIAL DENTURE IN THE IMPRESSION ALONG WITH THE OPPOSING ARCH, BITE REGISTRATION, AND SHADE IF NECESSARY.



ADD CLASP  
CHECK FIT AND NEED FOR RELINE PRIOR TO TAKING ANY IMPRESSION. FILL GAPS BY TAKING RELINE IMPRESSION.  
TAKE THE IMPRESSION WITH THE PARTIAL IN PLACE KEEPING THE PARTIAL DENTURE IN THE IMPRESSION ALONG WITH THE OPPOSING ARCH, BITE REGISTRATION.