

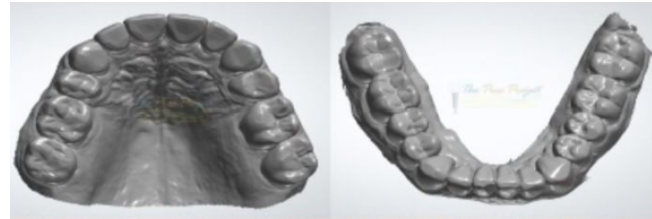
## Digital Workflow for Occlusal Guards

For accurate open bite registration use the Lucia jig because you can slowly reduce the vertical until we have the inter-arch space needed for the occlusal guard. This allows us to make a centric relation record at the open vertical which can be verified. Once verified, the records are alternated to record the opposing bite scans and produce an accurate maxillo-mandibular relationship in the scanner.

01

Scan maxillary and mandibular arches

- iTero case type: iRecord



02

Use a Lucia jig or other deprogrammer for centric relation, record and verify

- iTero Multi Scan feature you can provide a closed and open bite scan.



03

Take a bite scan at open vertical for desired occlusal guard thickness



04

Deliver occlusal guard adjust as need.  
Review care instructions

